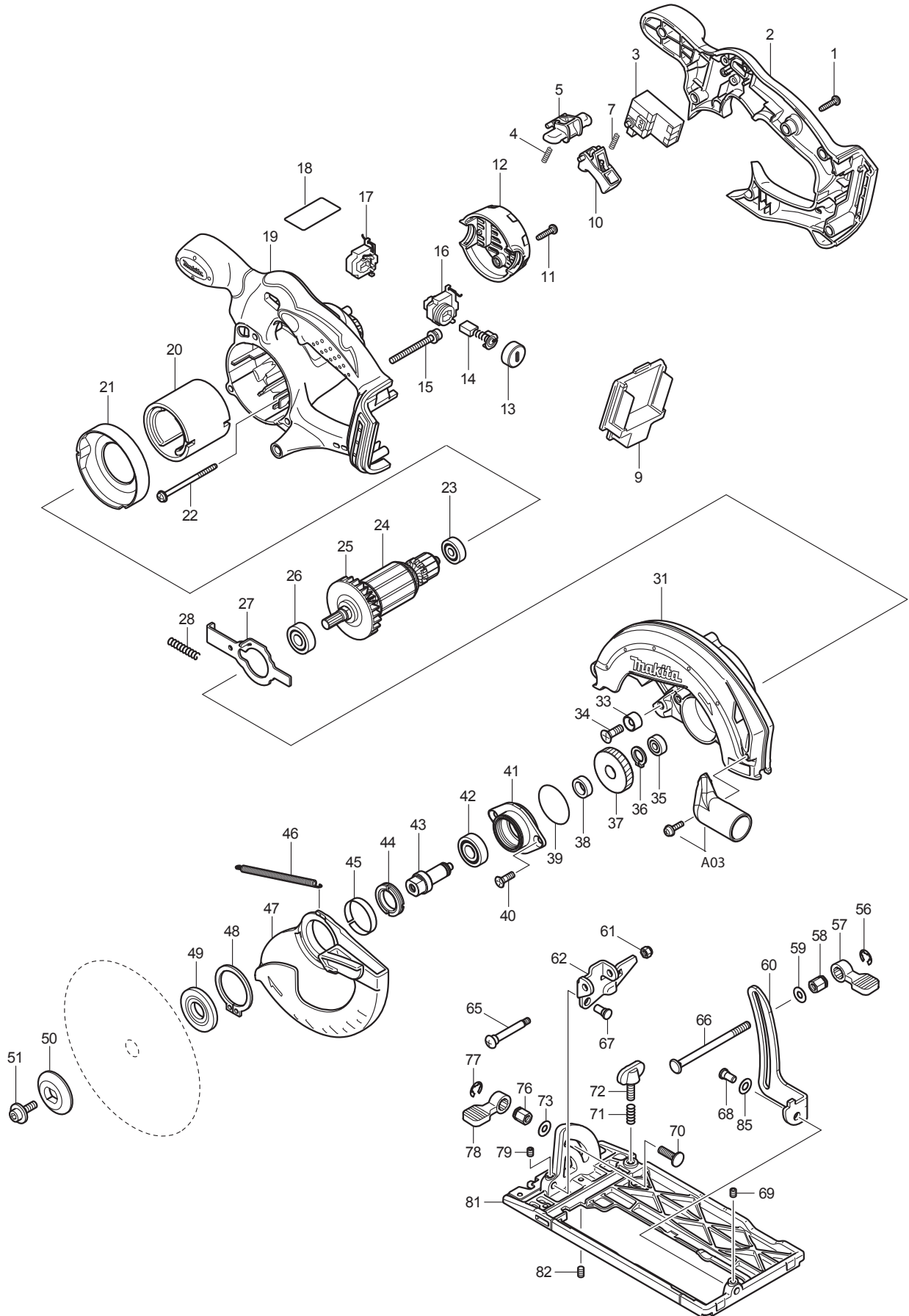




11 - 2013
DSS611RFE / DSS611F / DSS611Z
18V 6-1/2" CIRCULAR SAW



Item No	Type	Ref	Part No	Description	Qty	Unit
001	2		266326-2	TAPPING SCREW 4X18	5	PC.
002			141472-1	HANDLE COVER COMPLETE	1	PC.
003			651976-0	SWITCH TG73BD	1	PC.
004			231469-9	COMPRESSION SPRING 4	1	PC.
005			419664-3	LOCK OFF LEVER	1	PC.
007			231469-9	COMPRESSION SPRING 4	1	PC.
009			644808-8	TERMINAL	1	PC.
010			419665-1	SWITCH LEVER	1	PC.
011	2		266326-2	TAPPING SCREW 4X18	2	PC.
012			419281-9	REAR COVER	1	PC.
013			643829-7	BRUSH HOLDER CAP	2	PC.
014			195022-4	CARBON BRUSH CB-441(2PCS/SET)	1	SET
015			911263-2	PAN HEAD SCREW M5X40	3	PC.
016			643897-0	BRUSH HOLDER	1	PC.
017			643898-8	BRUSH HOLDER	1	PC.
018			815L51-0	NAME PLATE F/DSS611	1	PC.
019			142597-4	MOTOR HOUSING COMPLETE	1	PC.
		INC.	803K44-3	CAUTION LABEL	1	PC.
020	3		638571-3	YOKE UNIT	1	PC.
021			419285-1	BAFFLE PLATE	1	PC.
022			266292-3	TAPPING SCREW 4X65	2	PC.
023			210045-2	BALL BEARING 627DDW	1	PC.
024			510095-0	ARMATURE ASS'Y 18V	1	PC.
		INC.		Item No. 23,25,26		
025			241869-5	FAN 55	1	PC.
026	2		210192-9	BALL BEARING 6000LLB	1	PC.
027			346059-6	SHAFT LOCK 104MM	1	PC.
028			233092-6	COMPRESSION SPRING 5	1	PC.
031			142596-6	BLADE CASE COMPLETE	1	PC.
		INC.	213434-0	O RING 26	1	PC.
		INC.	802U29-6	CAUTION LABEL	1	PC.
033			262049-0	RUBBER RING 6	1	PC.
034			251368-9	+ COUNTERSUNK SCREW M6	1	PC.
035			210028-2	BALL BEARING 606ZZ	1	PC.
036			961052-5	RETAINING RING S-12	1	PC.
037			227156-6	SPUR GEAR 52	1	PC.
038			257173-2	RING 12	1	PC.
039			213512-6	O RING 39	1	PC.
040			265034-2	+ COUNTERSUNK HEAD SCREW M5X16	2	PC.
041			318009-1	BEARING BOX	1	PC.
042	2		210163-6	BALL BEARING 6001DDW	1	PC.
043	2		327A37-1	SPINDLE	1	PC.
044			285845-9	BEARING RETAINER 19-29	1	PC.
045			345469-4	THICKNESS RING	1	PC.
046			231821-1	TENSION SPRING 3	1	PC.
047			419280-1	SAFETY COVER	1	PC.
048			961152-1	RETAINING RING (EXT) S-34	1	PC.
049			224411-7	INNER FLANGE 35	1	PC.
050			224409-4	OUTER FLANGE 35	1	PC.
051			266133-3	HEX. SOCKET HEAD BOLT M6X20	1	PC.
056			961014-3	STOP RING E-8	1	PC.
057			272229-0	LEVER 40	1	PC.
058			252158-3	HEX.NUT M6	1	PC.

Item No	Type	Ref	Part No	Description	Qty	Unit
059			941151-9	FLAT WASHER 6	1	PC.
060			345658-1	DEPTH GUIDE	1	PC.
061			252103-8	HEX. LOCK NUT M5-8	1	PC.
062			345657-3	ANGULAR GUIDE	1	PC.
065			265056-2	+ PAN HEAD SCREW M5	1	PC.
066			266194-3	FLAT HEAD SCREW M6X90	1	PC.
067			256480-0	SHOULDER PIN 6-7	1	PC.
068			256480-0	SHOULDER PIN 6-7	1	PC.
069			266264-8	H.S.SET SCREW(FLAT POINT)M5X6	1	PC.
070			251919-8	CAP SQUARE NECK BOLT M6X20	1	PC.
071			231007-7	COMPRESSION SPRING 6	1	PC.
072			251896-4	SCREW M5X20	1	PC.
073			941151-9	FLAT WASHER 6	1	PC.
076			252133-9	HEX. NUT M6	1	PC.
077			961014-3	STOP RING E-8	1	PC.
078			272251-7	LEVER 30	1	PC.
079			266264-8	H.S.SET SCREW(FLAT POINT)M5X6	1	PC.
081			154831-0	BASE COMPLETE	1	PC.
082			266229-0	H.S.SET SCREW(CUP POINT)M5X8	1	PC.
085			253186-1	FLAT WASHER 7	1	PC.
C01			877529-9	CARTON F/DSS611Z	1	PC.
D01			654208-4	RECEPTACLE	1	PC.
D02			654510-5	INSULATED CONNECTOR 5.5-SD	1	PC.
E01	1		620259-9	CONTROLLER	1	PC.
	2		620G72-7	CONTROLLER	1	PC.

ACCESSORIES

- See catalogue or visit www.makita.ca for more accessories information -

A01			164095-8	GUIDE RULE	1	PC.
A02			783203-8	HEX. WRENCH 5	1	PC.
A03			P-80012	DUST NOZZLE	1	PC.
A04			T-01395	6-1/2" C.T.SAW BLADE 16T	1	PC.
			A-85092	6-1/2" C.T.SAW BLADE 24T	1	PC.
			T-01404	6-1/2" C.T.SAW BLADE 24T	1	PC.
			T-01410	6-1/2" C.T.SAW BLADE 40T	1	PC.
			T-01426	6-1/2" C.T.SAW BLADE 16T/24T 2PC/SET	1	SET
	3		D-51063	6-1/2" C.T.SAW BLADE 16T WOOD	1	PC.
A05			-----	BATTERY CHARGER		
A06			-----	18V LI-ION BATTERY		
A07	2		141353-9	PLASTIC CARRING CASE COMPLETE	1	PC.
		INC.	163455-1	LATCH	2	PC.
		INC.	419360-3	HANDLE	1	PC.
A08			450128-8	BATTERY COVER	1	PC.
A11			821007X	TOOL BAG	1	PC.